

1 BAY LEFT FOR LEASE



FOR LEASE | 5608 BURBANK CRESCENT SE, BAY 2
CALGARY

Lead Agent |
Harvey Aronovich
Associate Vice President
403-560-2059
harvey@cdnglobal.com

Tate Aronovich
Associate
403-689-1079
tate@cdnglobal.com

CDNGLOBAL[®]

| FOR LEASE |

BUILDING INFO

ADDRESS

5608 Burbank Crescent SE

LEASE OPTIONS

Bay 2

Office: 1,095 SF

Warehouse: 3,295 SF

Total Size: 4,390 SF

OP COSTS

\$3.76 PSF

LOADING

1 Drive-In Door (12'x14') per Bay

CLEAR HEIGHT

18'

DISTRICT

Alyth Bonnybrook

LEASE RATE

Bay 2: \$9.50 PSF

LIGHTING

LED lighting

POWER

100 Amp per Bay

AVAILABILITY

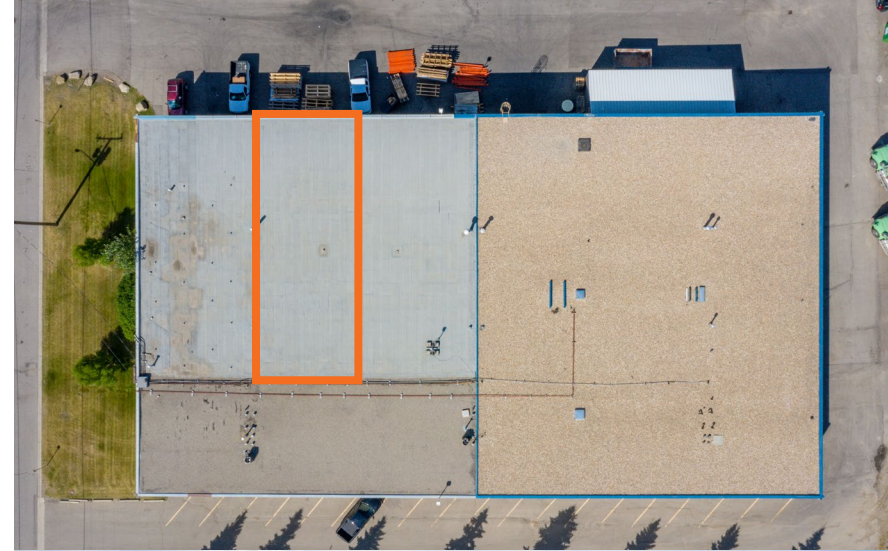
Bay 2: 30 Days

Bay 3: Immediate

Bays 4&5: Negotiable

HIGHLIGHTS

- Brand new office development
- I-G Zoning
- Wide bay widths
- Access to Deerfoot Trail, Blackfoot Trail, Glenmore Trail and MacLeod Trail
- Close to all staff amenities
- Upgraded office and warehouse bays

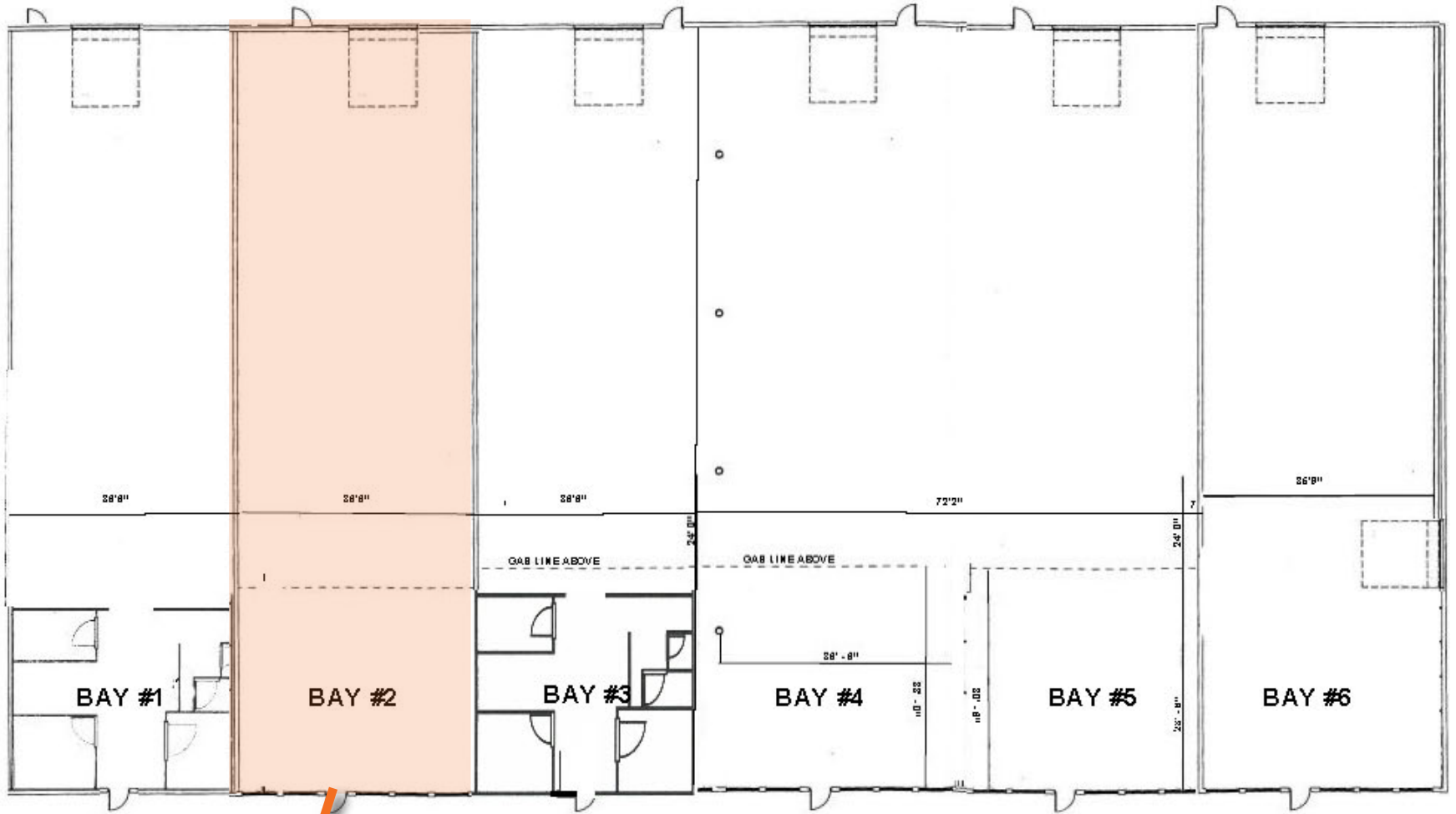


FLOOR PLAN

| FOR LEASE |



BURBANK CRESCENT SE



Available Bay for Lease

PARKING



| FOR LEASE |



Blackfoot Trail SE

11 Street SE

Subject Property Location

58 Avenue SE

Leading Agent |
Harvey Aronovich
Associate Vice President
403-560-2059
harvey@cdnglobal.com

Tate Aronovich
Associate
403-689-1079
tate@cdnglobal.com

CDNGLOBAL[®]

www.cdnglobal.com | 403.265.9966